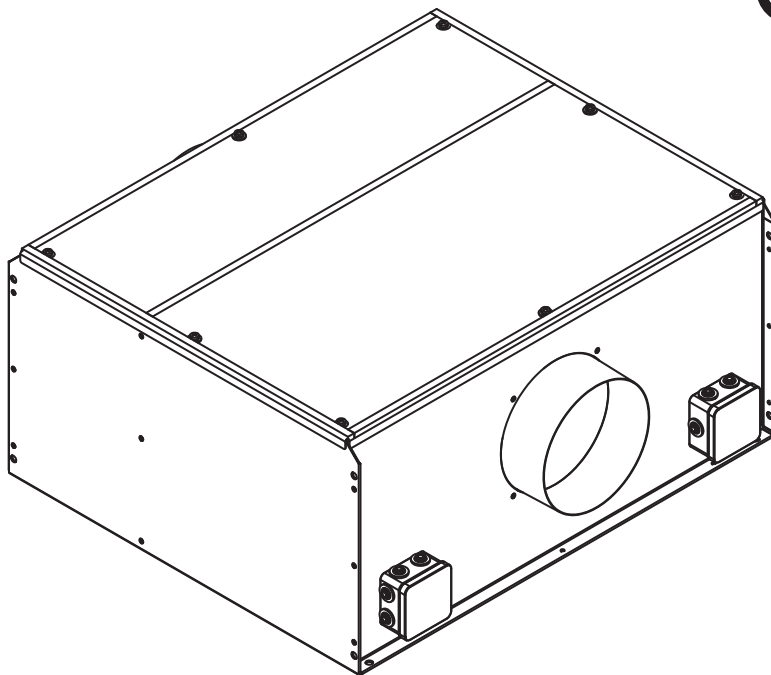

VORT TF



COD. 5.471.084.400

30/06/2016

VORTICE ELETTROSOCIALI S.p.A.
Strada Cerca, 2 - frazione di Zoate
20067 TRIBIANO (MI)
Tel. (+39) 02-90.69.91
Fax (+39) 02-90.64.625
ITALIA

VORTICE FRANCE
15/33 Rue Le Corbusier
Europarc
94046 CRETEIL Cedex
Tel. (+33) 1-55.12.50.00
Fax (+33) 1-55.12.50.01
FRANCE

VORTICE LIMITED
Beeches House - Eastern Avenue
Burton on Trent
DE13 0BB
Tel. (+44) 1283-492949
Fax (+44) 1283-544121
UNITED KINGDOM

Table of Contents

EN

***Read the instructions contained in this booklet carefully before using the appliance.
Vortice cannot assume any responsibility for damage to property or personal injury resulting from failure to abide by the instructions given in this booklet. Following these instructions will ensure a long service life and overall electrical and mechanical reliability.
Keep this instruction booklet in a safe place.***

Safety	3
Instruction for the installer	4
Installation	6
Operation	6
Wiring Diagrams	6
Maintenance/Cleaning	6
Important information on eco-compatible disposal	7
Figures	8

Safety



Warning:

this symbol indicates that care must be taken to avoid injury to the user

- Do not use this appliance for functions other than those described in this booklet.
 - After removing the appliance from its packaging, ensure that it is intact and undamaged. If in doubt, immediately contact a professionally qualified electrician or an authorised Technical Support Centre. Dispose of the packaging responsibly.
 - Certain fundamental rules must be observed when using any electrical appliance:
 - a) Never touch appliances with wet or damp hands;
 - b) Never touch appliances while barefoot.
 - Do not operate the appliance in the presence of flammable substances or vapours, such as alcohol, insecticides, petrol, etc.
 - Take all necessary precautions to ensure there are no back flows of gas into the room from the flue or from other open-flued combustion appliances.
 - This appliance should only be used with appropriate Vortice accessories.
 - The fans installed in this appliance are fitted with sealed for life bearings and do not require lubrication.
- Installation of the appliance in bathrooms (where there are bath-tubs or showers) must be in accordance with current regulations.



Caution:

this symbol indicates that care must be taken to avoid damaging the appliance

- Do not make modifications of any kind to this appliance.
 - Do not expose this appliance to the elements (rain, sun, etc.).
 - Regularly inspect the appliance for visible defects. If any faults are found, do not operate the appliance but contact a Vortice authorised Technical Support Centre immediately.
 - If the appliance malfunctions and/or develops a fault, contact a Vortice authorised Technical Support Centre immediately. Ensure that only genuine original Vortice spares are used for any repairs.
 - Should the appliance be dropped or suffer a heavy blow, have it checked immediately by a Vortice Authorised Technical Support Centre.
 - The electrical system to which the appliance is connected must conform to applicable standards.
 - Connect the appliance to the electrical power supply only if the rated power of the supply is sufficient to match the maximum rated power of the appliance. If not, contact a professional electrician without delay.
 - Switch off the system's main switch:
 - a) if the appliance does not function correctly;
 - b) before cleaning the outside of the appliance;
 - c) if you decide not to use the appliance for any length of time.
 - The room must have an adequate source of replacement air for this appliance to function effectively. In the event that other non-sealed combustion based appliances (such as water heaters, gas stoves, etc.) are installed in the same room, check that air replacement is sufficient for all appliances to work effectively together. The appliance cannot be used to control water heater switches, heaters, etc.; neither must it expel air into the hot air ducts of such appliances.
 - The air or fumes to be extracted from the room must be clean (i.e. free of grease, soot, chemical and corrosive agents, and explosive or flammable mixtures) and must not exceed a temperature of 50°C (122°F).
 - Keep the appliance grille free from obstruction to ensure optimum air flow.
 - Specifications for the power supply must match those of the data plate A (Fig. 2).
 - The appliance is fitted with a standard overtemperature safety device. This device automatically switches the fan off in the event of a fault condition (obstructed grilles or ducts, jammed fans...). In this case, after turning off the system's main power supply, remove the cause of the malfunction and reconnect the appliance once it has cooled. Should the safety device trip again, contact a Vortice Authorised Technical Support Centre.
- The appliance must be installed by a professionally qualified electrician.
- A multi-pole switch must be used to install the appliance. The contact opening gap must be no less than 3 mm.

INSTRUCTIONS FOR THE INSTALLER

In the installation phase, this appliance must be connected to the appropriate control units/autotransformers (not supplied) to which the control of the appliance is assigned, according to the following table:

PRODUCT		CONTROL UNIT		AUTOTRANSFORMER	
11.275	VORT TF100	11.839	CONTROL UNIT TF 100-125		
11.276	VORT TF125	11.839	CONTROL UNIT TF 100-125		
11.277	VORT TF150	11.833	CONTROL UNIT TF 150		
11.278	VORT TF200	11.840	CONTROL UNIT TF 200		
11.279	VORT TF250			12.922	IRM 40
11.280	VORT TF315			12.928	IRM 50

In addition, all models can be connected to the optional accessory "CONTROLLER CHANGEOVER" (Code 22.709), for obtaining both manual and automatic control of the changeover from one motor to the other.

In detail:

VORT TF 100-125

Without CONTROLLER CHANGEOVER :

Wiring diagram (fig. 8).

THE CONTROL UNIT controls (see also the control unit instructions booklet):

- ON/OFF
- Speed
- Motor 1 / Motor 2

With CONTROLLER CHANGEOVER :

Wiring diagram (fig. 9).

THE CONTROL UNIT controls only the speed (see also the control unit instructions booklet):

The CONTROLLER CHANGEOVER controls the changeover between the 2 motors (see the CONTROLLER CHANGEOVER instructions booklet).

NOTES FOR USERS:

- 1) The ON/OFF status of the system must be controlled only with the POWER switch on the CONTROLLER CHANGEOVER and the ON/OFF switch of the control unit must always remain ON.
- 2) Should the ON/OFF switch of the control unit be accidentally turned OFF, the system will go into error status. To reactivate it, it will be necessary to turn the switch back to ON, then switch the CONTROLLER CHANGEOVER off and on again with the POWER switch.

VORT TF 150-200

INSTRUCTIONS FOR THE INSTALLER:

- 1) It is necessary to install 2 pairs of relays/buttons (not supplied). Each pair controls one motor. At the time of installation, the two motors must be activated by pressing the two buttons. In the case of intervention for a fault, manual resetting is carried out by pressing the two buttons.
- 2) At the time of installation, it is preferable to position the buttons in such a way that they can be used also by the user, in case it is necessary to reset the relays after an interruption in the power supply.

NOTES FOR USERS:

- 1) In the case of a system malfunction, it is necessary to call the technical assistance who will reset the relay after having removed the cause of the fault. In the case of simple interruption of the power supply, the user can reset the relay himself by pressing the buttons.

Without CONTROLLER CHANGEOVER :

Wiring diagram (fig.10).

THE CONTROL UNIT controls (see also the control unit instructions booklet):

- ON/OFF
- Speed
- Motor 1 / Motor 2
- The two pairs or relays/buttons control the safe operation of the motors

With CONTROLLER CHANGEOVER :

Wiring diagram (fig.11).

THE CONTROL UNIT controls only the speed (see also the control unit instructions booklet):

The CONTROLLER CHANGEOVER controls the changeover between the 2 motors (see the CONTROLLER CHANGEOVER instructions booklet).

The two pairs or relays/buttons control the safe operation of the motors.

NOTES FOR USERS:

- 1) The ON/OFF status of the system must be controlled only with the POWER switch on the CONTROLLER CHANGEOVER and the ON/OFF switch of the control unit must always remain ON.
- 2) Should the ON/OFF switch of the control unit be accidentally turned OFF, the system will go into error status. To reactivate it, it will be necessary to turn the switch back to ON, then switch the CONTROLLER CHANGEOVER off and on again with the POWER switch.

VORT TF 250-315

INSTRUCTIONS FOR THE INSTALLER:

- 1) It is necessary to install a selector switch (not supplied), for selecting the motor.
- 2) It is necessary to install the 2 pairs of relays/buttons (not supplied). Each pair controls one motor. At the time of installation, the two motors must be activated by pressing the two buttons. In the case of intervention for a fault, manual resetting is carried out by pressing the two buttons.
- 3) At the time of installation, it is preferable to position the buttons in such a way that they can be used also by the user, in case it is necessary to reset the relays after an interruption in the voltage.

NOTES FOR USERS:

- 1) For these models, switching on and speed regulation are carried out on the IRM autotransformer, while the motor is selected with an external selector switch.
- 2) In the case of a system malfunction, it is necessary to call the technical assistance who will reset the relay after having removed the cause of the fault. In the case of simple interruption of the power supply, the user can reset the relay himself by pressing the buttons.

Without CONTROLLER CHANGEOVER :

Wiring diagram (fig. 12)

The AUTOTRANSFORMER controls the speed: 0 (OFF), 1, 2, 3.

The selector switch controls: Motor 1 / Motor 2

The two pairs or relays/buttons control the safe operation of the motors

With CONTROLLER CHANGEOVER :

Wiring diagram (fig. 13)

The AUTOTRANSFORMER controls the speed: 0 (OFF), 1, 2, 3.

The selector switch controls: Motor 1 / Motor 2

The two pairs or relays/buttons control the safe operation of the motors

The CONTROLLER CHANGEOVER controls the changeover between the 2 motors (see the CONTROLLER CHANGEOVER instructions booklet).

NOTES FOR USERS:

- 1) The ON/OFF status of the system must be controlled only with the POWER switch on the CONTROLLER CHANGEOVER and the speed selector must remain on 1/2/3.
- 2) Should the switch on the autotransformer be accidentally turned to 0 (OFF), the system will go into error status. To reactivate it, it will be necessary to turn the speed selector back to 1/2/3, then switch the CONTROLLER CHANGEOVER off and on again with the POWER switch.

Installation

(Fig. 3 ÷ 7)

N.B.

The appliance may only be installed horizontally

The fan blowers inside the appliance are equipped with non-return dampers (mod 100,125) or gravity backflow preventers (mod 150,200,250,315) to improve the efficiency of airflow and noise.

100,125 models:

the appliance can be installed either on the floor (access cover facing upwards) or on the ceiling (access cover facing downwards), without any preparatory work.

150,200,250,315 models:

standard installation is on the floor (access cover facing upwards); if you opt for ceiling installation, you first need to remove the access cover to reverse the positions of the gravity dampers (fig. 3; to be done by the Installer).

N.B.

The operation described above is important in order to ensure the proper functioning of the appliance.

N.B.

The fixing devices shown are merely illustrative. In order to install, observe the following:

- Check that the installation surface is structurally appropriate to bear the weight of the appliance;
- Take care that the fixing device does not impair the structural strength of the installation surface;
- Use suitable fixings for the weight of the appliance and the material forming the installation surface;
- Ensure the fixings are tightened correctly.

N.B.

Pipes shorter than 1.5 m must end with a protective grille, if the appliance is installed at a height of less than 2.3 m.

Operation

The appliance operates continuously. In order to manually control switching over operation from one fan blower to another, you must connect the appliance to an external switch (to be done by the Installer).

We recommend that this appliance be connected using the Auto.changeover controller (Part No. 22709); (see also Wiring Diagrams: fig. 9,11,13).

Appliance is supplied for use at a single speed. If you wish to speed control the appliance, you will need to connect a speed regulator when installing (to be done by the Installer).

Wiring diagrams

(Fig. 8 ÷ 13);

Maintenance and cleaning

(Fig. 14 ÷ 16)

N.B.

Isolate the appliance from the power supply and make sure that it cannot be accidentally restored.

In the event of extraordinary maintenance, the fan blowers on the appliance can be replaced without uninstalling the appliance, because removal of the cover provides full access to the interior of the appliance.

Important information concerning the environmentally compatible disposal

IN CERTAIN EUROPEAN UNION COUNTRIES THIS PRODUCT DOES NOT FALL WITHIN THE REQUIREMENTS OF THE NATIONAL LAWS IMPLEMENTING DIRECTIVE WEEE, AND IN THESE COUNTRIES THE PRODUCT IS NOT SUBJECT TO SEPARATE DISPOSAL OPERATIONS AT THE END OF ITS WORKING LIFE.

This product conforms to EU Directive 2002/96/EC.

This appliance bears the symbol of the barred waste bin. This indicates that, at the end of its useful life, it must not be disposed of as domestic waste, but must be taken to a collection centre for waste electrical and electronic equipment, or returned to a retailer on purchase of a replacement.



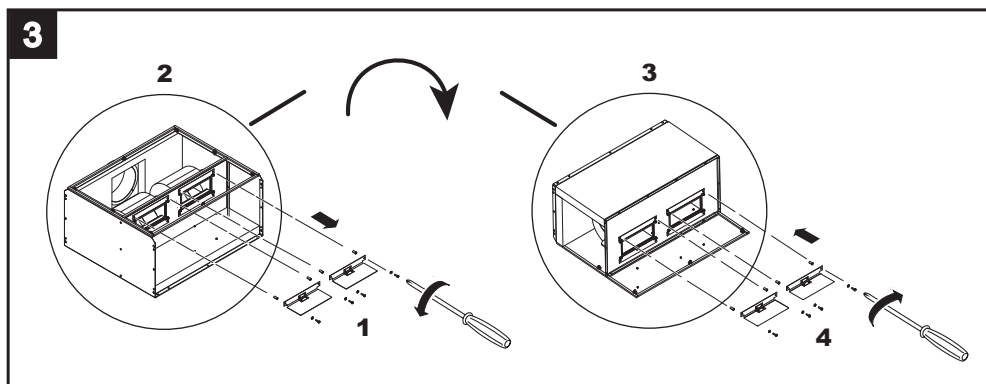
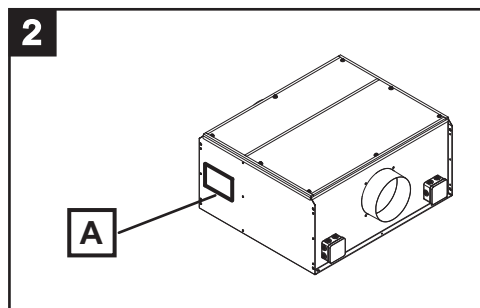
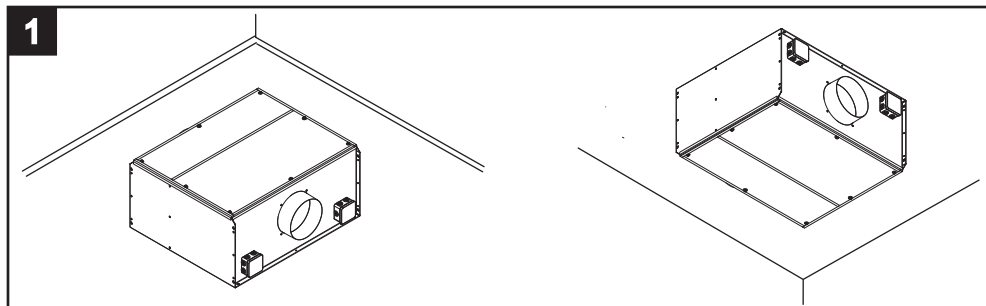
It is the user's responsibility to dispose of this appliance through the appropriate channels at the end of its useful life. Failure to do so may incur the penalties established by laws governing waste disposal.

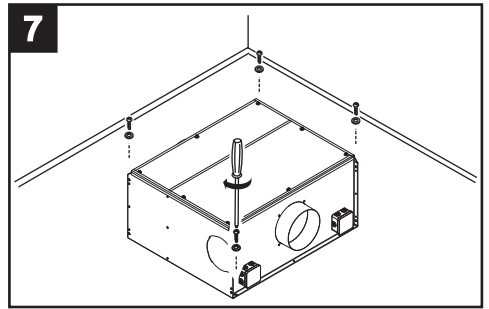
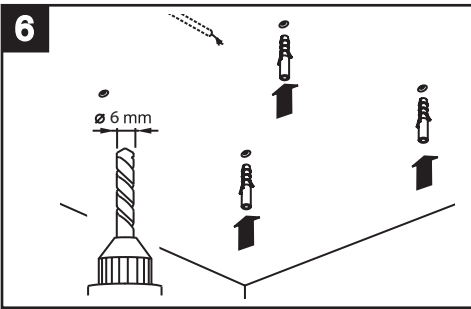
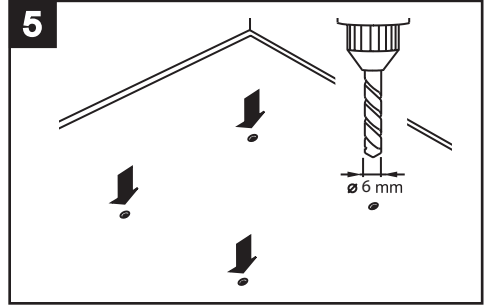
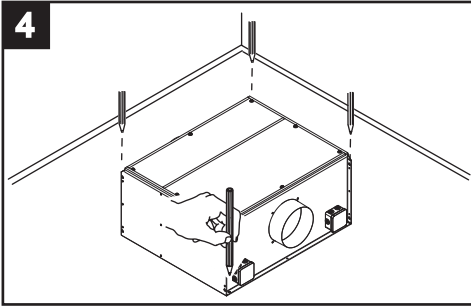
Proper differential collection, and the subsequent recycling, processing and environmentally compatible disposal of waste equipment avoids unnecessary damage to the environment and possible related health risks, and also promotes recycling of the materials used in the appliance.

For further information on waste collection and disposal, contact your local waste disposal service, or the shop from which you purchased the appliance.

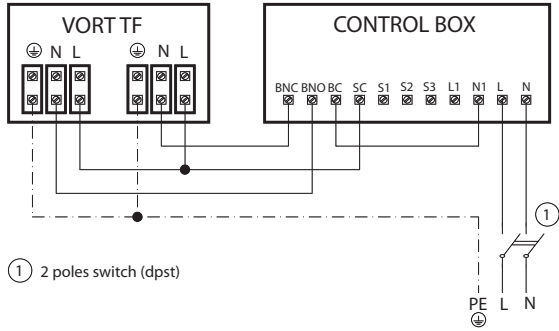
Manufacturers and importers fulfil their responsibilities for recycling, processing and environmentally compatible disposal either directly or by participating in collective systems.

Figures



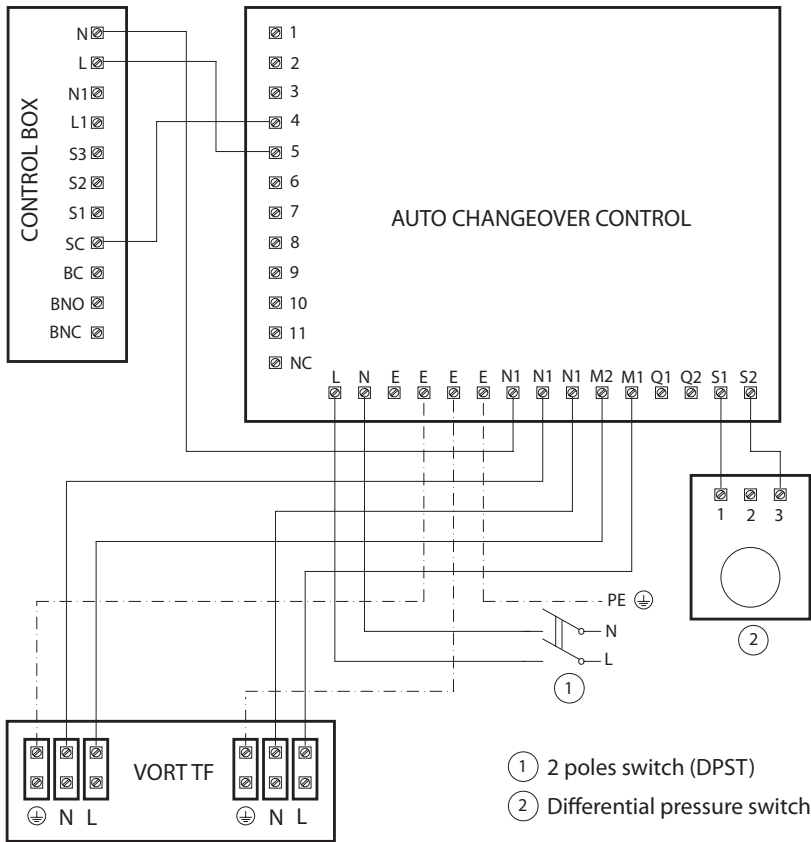


8



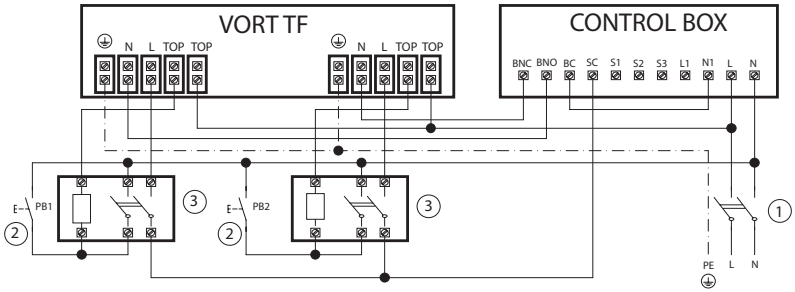
Vort TF
100 / 125

9



Vort TF
100 / 125

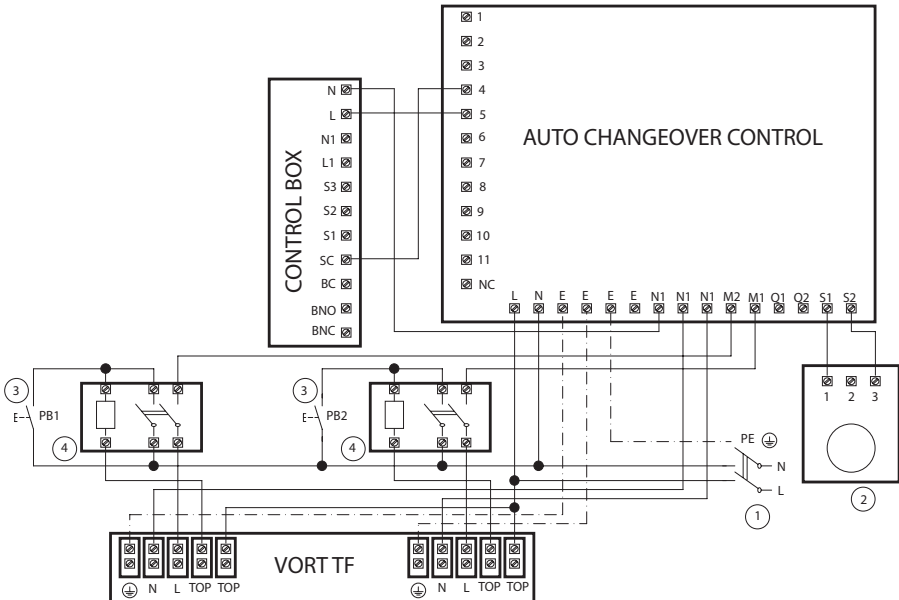
10



Vort TF
150 / 200

- ① 2 poles switch (dpst)
- ② Push button (SPDT-NO)
- ③ Monostable relay (DPST-NO, COIL NOM. VOLTAGE 230VAC, MAX CURRENT 10A)

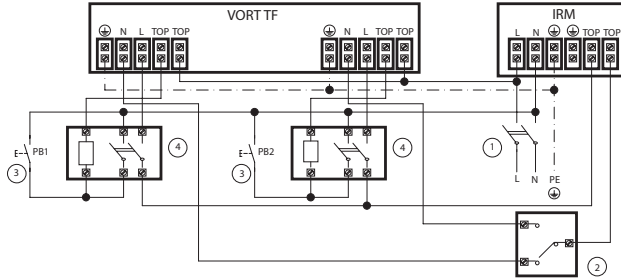
11



Vort TF
150 / 200

- ① 2 poles switch (DPST)
- ② Differential pressure switch
- ③ Pushbutton (SPDT-NO)
- ④ Monostable relay (DSPT-N, COIL 230VAC; 10A)

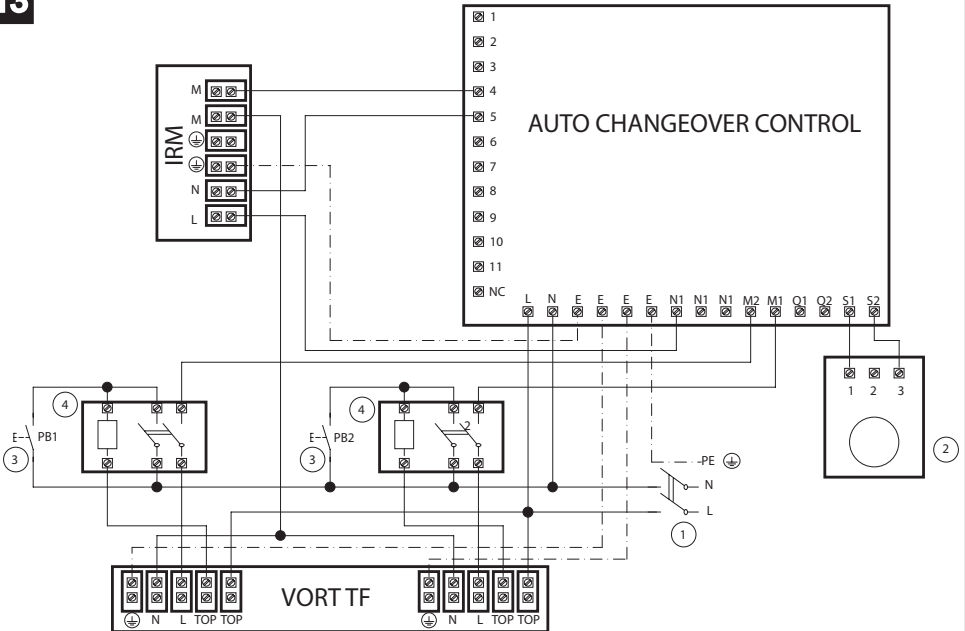
12



Vort TF
250 / 315

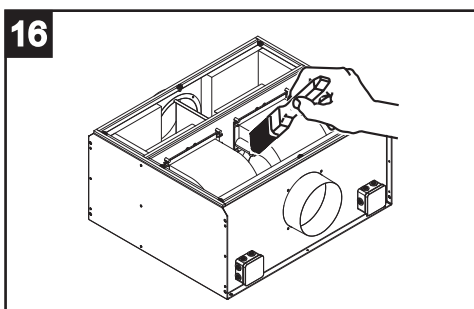
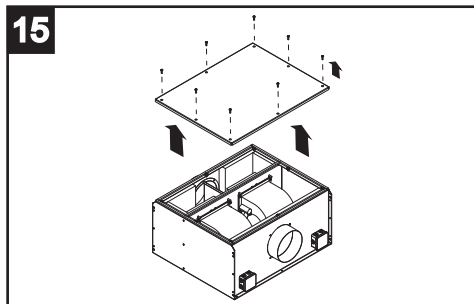
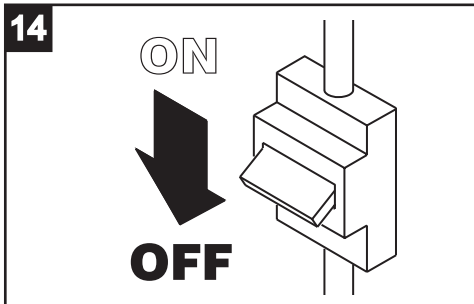
- ① 2 poles switch (dpst)
- ② 2-way switch (SPDT, 8A on inductive load)
- ③ Pushbutton (SPDT-NO)
- ④ Monostable relay (DPST-NO, COIL NOM. VOLTAGE 230VAC, MAX CURRENT 10A)

13



Vort TF
250 / 315

- ① 2 poles switch (DPST)
- ② Differential pressure switch
- ③ Pushbutton (SPDT-NO)
- ④ Monostable relay (DSPT-N, COIL 230VAC; 10A)





Vortice S.p.A. reserves the right to make improvements to products at any time and without prior notice.